

Gravity: Inverted Universal Globe Spin Theory – 10/28/2007

William D. Short, Balderston Drive, Exton PA, USA

Specific Topic: #36 original thought, Gravity and Magnetic Fields, Pulling Together & Repelling Apart.

Exhibit: Section A – 44 – A

Date: 11/7/2007

This illustration represents what keeps us apart. The inverted spinning activity not only creates a center of gravity, but it also creates magnetic fields that help keep the planets apart. Like the magnets we all played with as children, one way they attracted each other, the other way they repelled each other.

Copyright © All Rights Reserved, 2007

Gravity: Inverted Universal Globe Spin Theory – 10/28/2007

William D. Short, Balderston Drive, Exton PA, USA

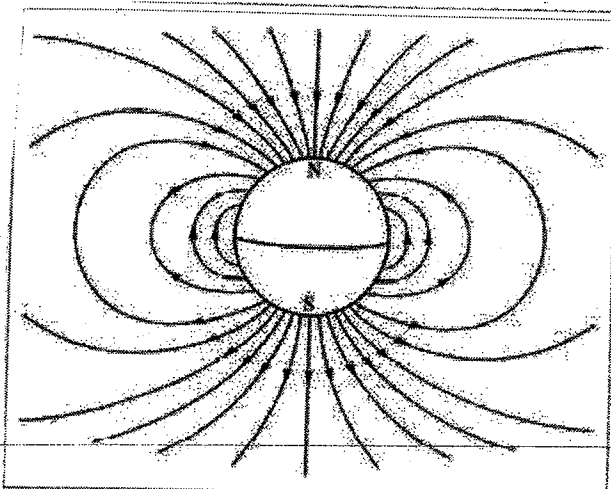
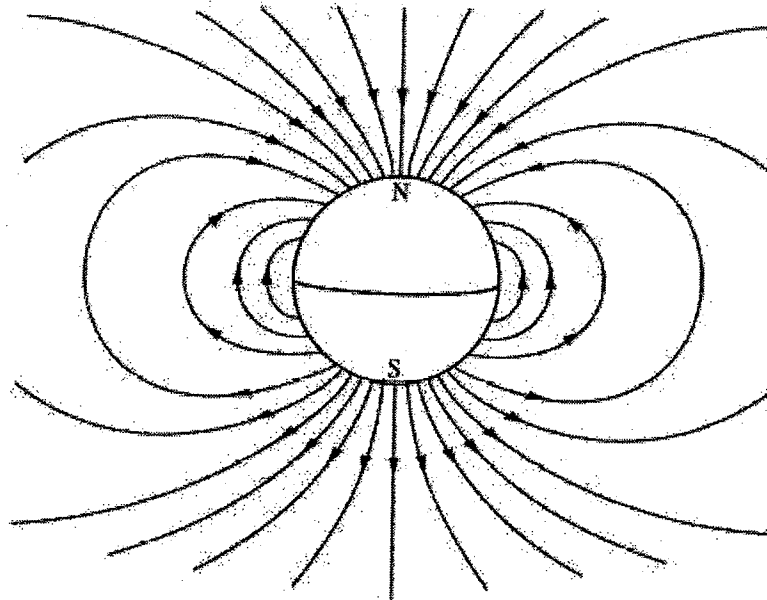
Specific Topic: #36 original thought, Gravity and Magnetic Fields, Pulling Together & Repelling Apart.

Exhibit: Section A – 44 – A

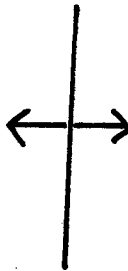
Date: 11/7/2007

EXHIBIT: _____

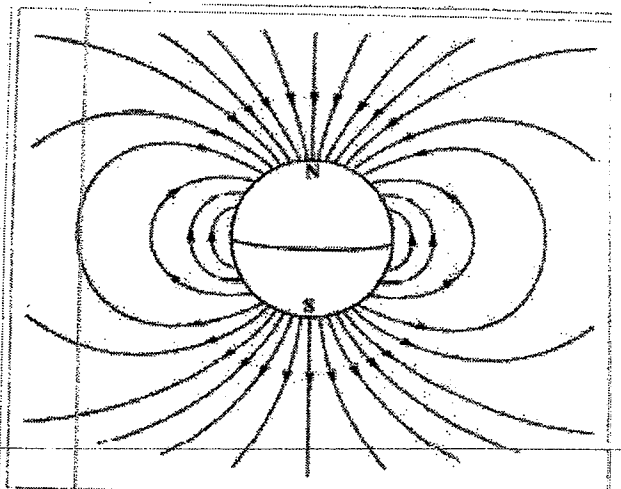
Pull together &
KEEP APART



PLANETS



REPEL



The Earth's magnetic field, which is approximately a dipole. However, the "N" and "S" (north and south) poles are labeled here *geographically*, which is the opposite of the convention for labeling the poles of a magnetic dipole moment.

The Earth's magnetic field, which is approximately a dipole. However, the "N" and "S" (north and south) poles are labeled here *geographically*, which is the opposite of the convention for labeling the poles of a magnetic dipole moment.

Gravity: Inverted Universal Globe Spin Theory – 10/28/2007

William D. Short, Balderston Drive, Exton PA, USA

Specific Topic: #37 original thought, Gravity and Magnetic Fields, Effected by Mass.

Exhibit: Section A – 44 – B

Date: 11/7/2007

This next illustration represents the reality that the larger the object the greater the magnetic field would be, which in turn is helping planets keep away from each other (repelling each other).

Like for example the Sun would have a large magnetic field, but when place side by side with a planet that are also on axis it is helping to repel the planet vs. allowing the gravitational pull to take over.

Gravity keeps us together as a solar system, and magnetic fields that are generated by gravitational activity help to keep us apart.

Copyright © All Rights Reserved, 2007

Gravity: Inverted Universal Globe Spin Theory – 10/28/2007

William D. Short, Balderston Drive, Exton PA, USA

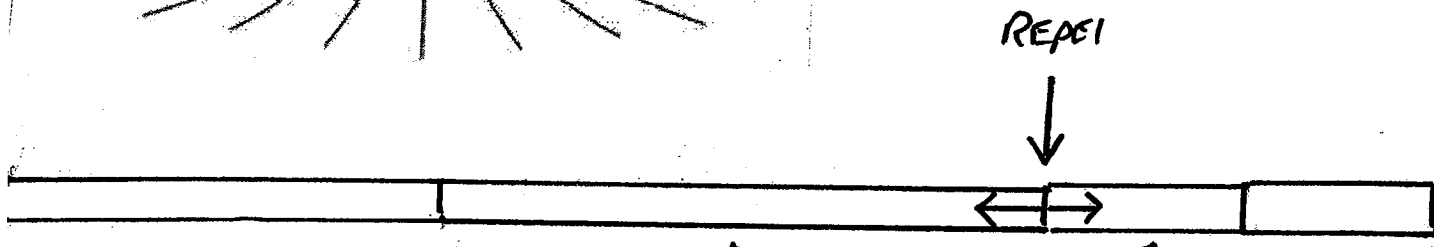
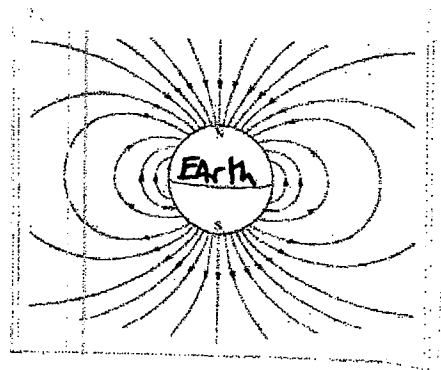
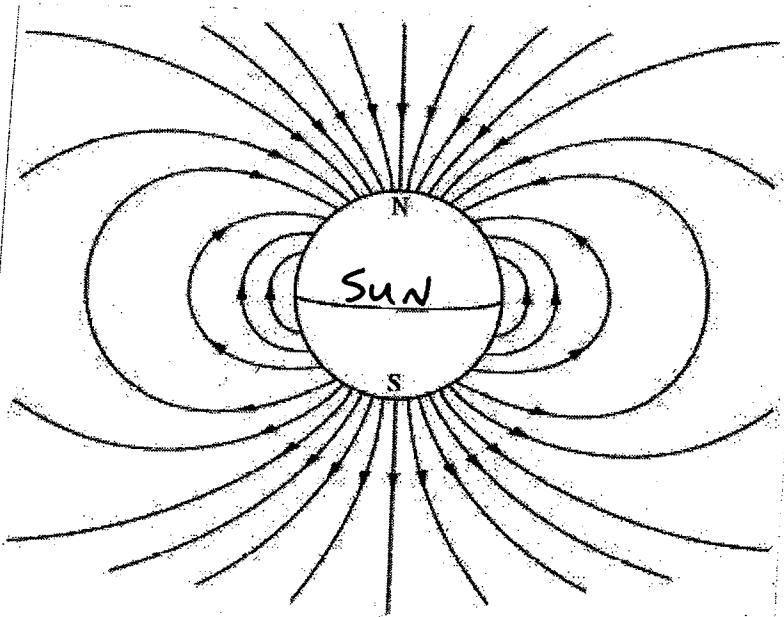
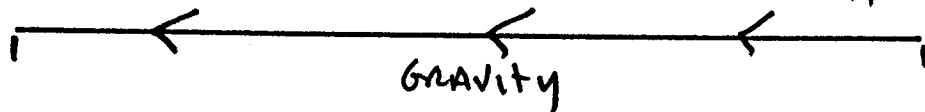
Specific Topic: #37 original thought, Gravity and Magnetic Fields, Effected by Mass.

Exhibit: Section A – 44 – B

Date: 11/7/2007

Exhibit: _____

SIZE AFFECTS
MAGNETIC FIELD



GRAVITY KEEPS
US TOGETHER
& MAGNETISM
KEEPS US APART

GREATER
SIZE & GRAVITY
GREATER
MAGNETISM REPEL
DISTANCE

LESS
SIZE & GRAVITY
LESS
MAGNETISM REPEL
DISTANCE

Gravity: Inverted Universal Globe Spin Theory – 10/28/2007

William D. Short, Balderston Drive, Exton PA, USA

Specific Topic: #41 original thought, Our Solar System, Rotates Counterclockwise – West into the East

Exhibit: Section A – 48 - A

Date: 11/7/2007

This illustration supports the directions of our plants and our Sun. If there is any question as to which direction they travel this document should be ample, thank you Wikipedia. Our Solar System at all degrees travels from the West into the East, or “Counterclockwise”.

Copyright © All Rights Reserved, 2007

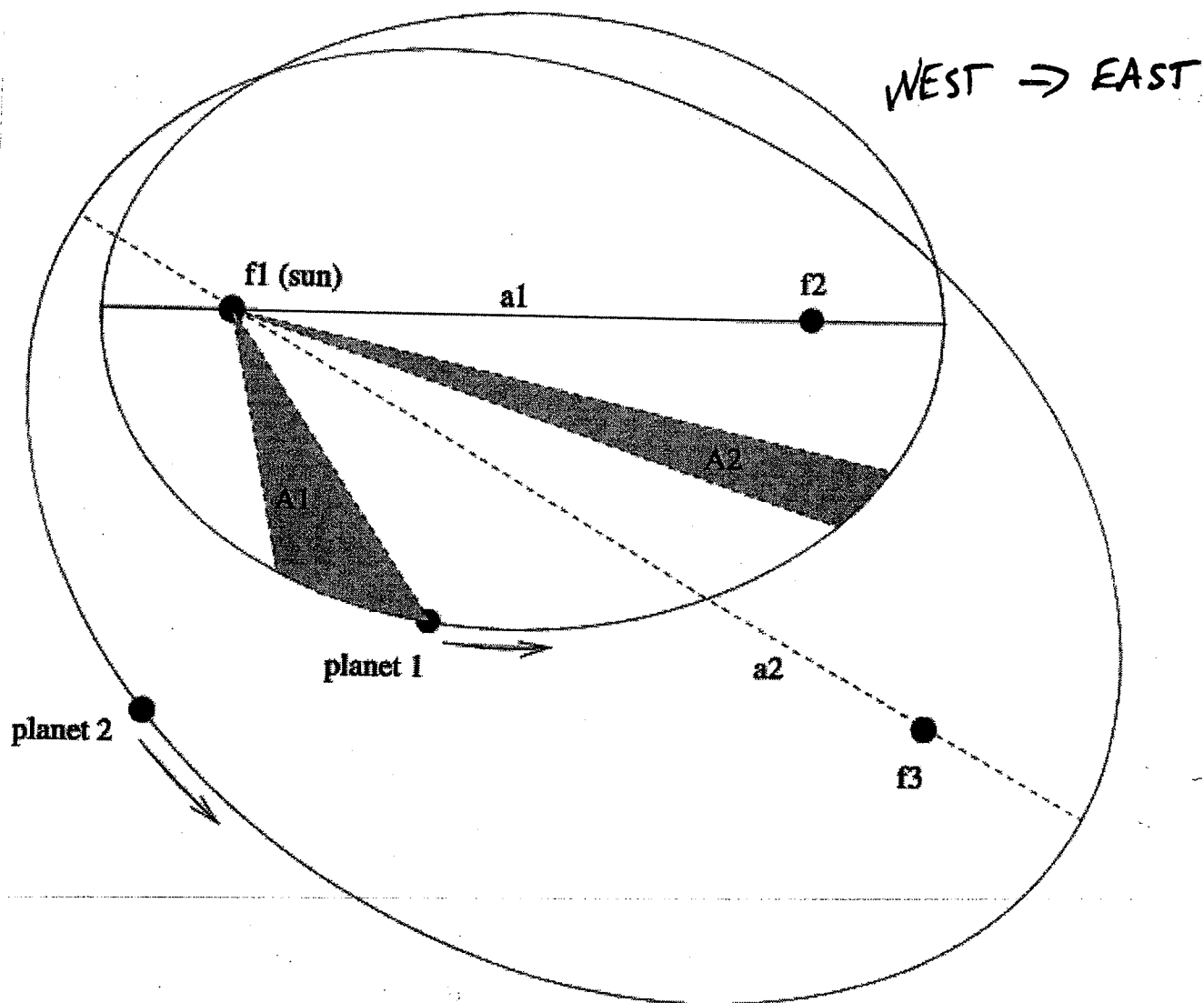
Gravity: Inverted Universal Globe Spin Theory – 10/28/2007

William D. Short, Balderston Drive, Exton PA, USA

Specific Topic: #41 original thought, Our Solar System, Rotates Counterclockwise – West into the East

Exhibit: Section A – 48 - A

Date: 11/7/2007



Gravity: Inverted Universal Globe Spin Theory – 10/28/2007

William D. Short, Balderston Drive, Exton PA, USA

Specific Topic: #43 original thought, Water Rotation – Mystery Explained & Supportive Evidence

Exhibit: Section B - 30 - A

Date: 11/7/2007

This document is included because it speaks volumes, and it supports the “Inverted Universal Globe Spin Theory”, **Ask A Scientist!**

Gravity explained thru the “Inverted Universal Globe Spin Theory” now explains the “single cause” for the formation of a Vortex in a drain, and the direction the Rotation takes as well! This document is included because it documents very clearly the direction Water Drains Rotate, and the fact that nobody seems to understand exactly why. This document helps to shed light on the “Inverted Universal Globe Spin Theory” because in the Northern Hemisphere, Water Rotates in Drains “anti-clockwise” and in the Southern Hemisphere, Water Rotates in Drains “clockwise”, as this Scientist puts it.

Maybe some would try to claim that the “Winds are the Cause” of a Cyclone’s Rotational Direction in the Northern Hemisphere and in the Southern Hemisphere, and that the “Winds are the Cause” or why in the Northern Hemisphere these systems rotate “anti-clockwise” and in the Southern Hemisphere they rotate “clockwise”, but the problem with this argument is that when you take it down to the level of a Water Drain you find that there are no known winds that are taking place there. Yet, Water Drains are Rotating in exactly the same direction and they too are creating Vortexes. The way gravity is “Actively in Motion” is the cause, and gravity as explained in this document is the “Single Cause” that is creating this phenomena, this reality. We can all witness this evidenced that is around us.

Furthermore the way Gravity is in spirals towards the Center of Earth’s Core fully explains why the rotation of water drains are going in the direction they are; they are merely following the spiral direction of Gravity, they are doing what they must do. It is the Earth’s directional rotation that controls the directional rotation of the Coriolis Effect thru an Inversion that takes place while inside an object that is rotating in the opposite direction. Please review the “Global Spin Model” to illustrate this point. The Planet Earth and all other objects in this Universe that are rotating “Counterclockwise” are the ones that one could say are “traveling upstream, or against the grain”.

Some of the factual evidence supporting an “Inverted Universal Glob Spin Theory” on Earth Are:

- 1. Cyclones/Storm Rotations: in Northern Hemisphere the rotation is Counterclockwise, and in Southern Hemisphere the rotation is Clockwise, labeled the Coriolis Effect.**
- 2. Water Rotations in Drains: in Northern Hemisphere the rotation is Counterclockwise, and in Southern Hemisphere the rotation is Clockwise, labeled the Coriolis Effect.**
- 3. Vortex formations found in both: Cyclones/Storm and Water Drains.**

The Coriolis Effect on Earth demonstrates the “Inversion” that is created by our Earth as it rotates in the opposite direction inside this Universal Globe. The Coriolis Effect shows us the direction of Gravity as it rotates towards the center of the Earth. Put in other words, if what has been labeled the “Coriolis Effect” was not taking place, then there would be no “Inward Directed Center of Gravity” here on Earth.

Now the High School Physics teach can explain the reason why drains drain the way they do, Gravity.

Copyright © All Rights Reserved, 2007

Gravity: Inverted Universal Globe Spin Theory – 10/28/2007

William D. Short, Balderston Drive, Exton PA, USA

Specific Topic: #43 original thought, Water Rotation – Mystery Explained & Supportive Evidence

Exhibit: Section B - 30 - A

Date: 11/7/2007

Exhibit: _____

*EVIDENCE
AND NO ONE CAN CLAIM WIND*

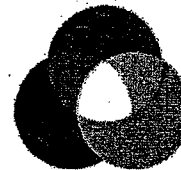
Water Rotation and Drains

Page 1 of 1



Ask A Scientist

Physics Archive



NEWTON
Ask A Scientist

Water Rotation and Drains

7/14/2003

name Katheryn F.
status other
age 30s
Question - Why does water circle down the drain? I remember studying this in high school physics but can not remember the reason and my young son is now asking me.

There is no "single cause" for the formation of a vortex in a drain. It is due to "turbulent flow", which really only puts a name on it. As the water moves along the drain and into the sink trap, the boundary of the water at the pipe walls is slower than in the center of the pipe. The water in the sink/basin is not stagnant -- that is it has eddy currents either clockwise or counter clockwise depending upon irregularities in the sink, the location of the faucet with respect to the drain, temperature gradients,...and a list of other origins. Experiments under controlled conditions have actually shown that it is VERY difficult to maintain water stagnant in a vessel -- and certainly not in any configuration you might have around the house. For example, you need baffles in the X,Y, and Z directions. Once the water with a small angular component enters the mouth of the drain, the velocity gradient in the down pipe accelerates the angular motion and a vortex forms.

The "explanation" you probably heard in high school physics is that the rotation of the earth produces Coriolis forces that make the vortex flow anti-clockwise in the northern hemisphere and clockwise in the Southern hemisphere. This is an error that has a life of its own, and just will not die. A quick calculation of the magnitude of the Coriolis effect on the mass and time scale of the draining of a sink are WAY too small to account for vortex formation.

The fact that a given sink always may flow in the same direction is most likely due to some asymmetry in the geometry of the sink and the drain.

Vince Calder
=====



Back to Physics	Ask A Scientist Index
NEWTON Homepage	Ask A Question



*NEWTON is an electronic community for Science, Math, and Computer Science K-12 Educators.
Argonne National Laboratory, Division of Educational Programs, Harold Myron, Ph.D., Division Director.*

Gravity: Inverted Universal Globe Spin Theory – 10/28/2007

William D. Short, Balderston Drive, Exton PA, USA

Specific Topic: #44, original thought, The Tropopause System Applied in the Universe, a Center of Gravity is Created and Maintained

Exhibit: Section B - 31 - A

Date: 11/7/2007

This illustration simply takes what is already known as accepted in Science, the Tropopause System, (please see Exhibit A – 23 – C) and it applies the very same principle of science to the “Inverted Universal Globe Spin Theory” in order to understand how the “Inverted Universal Globe Spin Theory” physically works. This applied principle of science explains, clarifies, illustrates, and demonstrates how Gravity is both created and maintained.

An “Inward Directed Pulling Center of Gravity” towards the Center Core of a Planet is created by simply getting an object inside a larger finite global object to rotate in the opposite direction of the finite larger global object, thus the inversion. It is maintained then by simply continuing the rotation in the opposite direction, which in turn is maintaining the inversion.

By way of illustration we then take this accepted principle of science, the Tropopause System, (Rotating Inverted Systems that are Creating a Downward Pulling Force) and apply it to a smaller object that is now rotating inside a larger object whereby the larger object is rotating in the opposite direction, (the Inversion). We find that the inverse spin of the smaller object against the spin of the larger object creates a gravitational pull towards the core/center of the earth, an inward center of gravity.

Copyright © All Rights Reserved, 2007

Gravity: Inverted Universal Globe Spin Theory - 10/28/2007

William D. Short, Balderston Drive, Exton PA, USA

Specific Topic: #44, original thought, The Tropopause System Applied in the Universe, a Center of Gravity is Created and Maintained

Exhibit: Section B - 31 - A

Date: 11/7/2007

Copyright © All Rights Reserved, 2007

